

FIONA ACKERMAN - GLASSLANDS – 13.9. - 30.10.2017

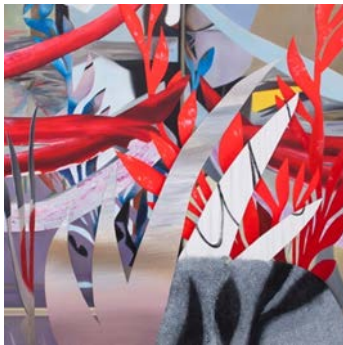
Invitation to the opening of the exhibition on the **13.09.2017, 19:30, artist is present**

Canadian artist **Fiona Ackerman** was born in 1978 in Ottawa and studied fine arts at Concordia University and at Emily Carr University of Art and Design in Vancouver where she lives and works today. Fiona Ackerman is a very active emerging artist in Canada, with regular exhibitions at renowned galleries (Vancouver, Calgary and Toronto) and various public art projects. She participates in art fairs internationally. Germany too, is not an unknown territory for her. She has already had several exhibitions in Münster, Nürnberg, Düsseldorf and Berlin.

In her second exhibition at **GALERIE KREMERS**, and during Art Week at **POSITIONS Berlin** Art Fair, we'll be exhibiting paintings from her latest series „**GLASSLANDS**“. Here, as with her first Berlin exhibition, Ackerman refers to the oldest and richest of Foucault's concept of heterotopic space –the garden. Its emergence marks Homo Faber's first visible and sustainable intervention on his natural environment. A complete cultural history can be written on the grounds of the garden, where cultural ideas from all walks of life are manifested, whether they are political, religious or aesthetic in nature.

Nature, to be commanded, must be obeyed– Francis Bacon, Novum Organum, 1620

In analogy to the landscape gardener, the artist designs, choosing from an infinite pool of shapes and colors, selects, prunes and excludes. If the gardener takes 'wild nature' as her starting point, Ackerman uses a trick to create a comparable foundation: using photography, she documents her own hand made wilderness built of mirrors and cut paper painting. These photographs become the source for her canvas gardens. By doing this, she creates a situation similar to that of a gardener. She preserves the aspect of unpredictability, which always plays a role in the shaping of nature.



Red Snake, 2017, 101,5 x 101,5 cm, AaL



Victory Garden, 2017, 90,5 x 91 cm, AaL



Studio Garden, 2017, 91 x 91 cm, AaL

The result is impressive. In each painting we enter a different world: a jungle with colorful, strong and animal-like vine or a place with delicate leaves and flowers reminiscent of a Japanese garden. A multitude of different layers invite us to look more closely, to see what may be hiding behind the next corner.

The fact that these 'gardens' appear very lively, points to the quality of the gardener and the wise choices she has made in the design of her materials.