

GALERIE KREMERS

Schmiedehof 17 (Eingang Eberhard-Roters-Platz) 10965 Berlin

Öffnungszeiten: Mo - Fr 11 h – 18 h und nach Vereinbarung

T. +49 30 469 98 068 /+49 176 647 27 247 - www.galerie-kremers.com - info@galerie-kremers.

Die Galerie Kremers freut sich, Sie zu Ihrer nächsten Ausstellungseröffnung am **08.11.19** von **19h-21h** einzuladen:

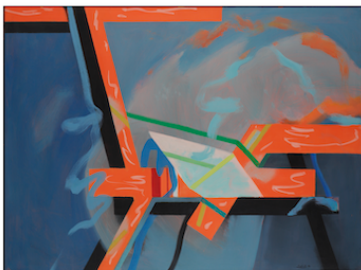
100 YEARS ERNST WEIL – VIRTUOUS PAINTING AGAINST THE ZEITGEIST



„Between 1939 and 1945 my wish to study art became stronger and stronger and after having studied architecture on the Technische Hochschule Stuttgart (...) I started to study painting from 1946 – 1950 on the Academy in Munich.”

Those who know that right after graduating from high school in 1939 Ernst Weil served as a soldier during the Second World War until 1944, might be astonished by this self-testimony written in English. His determination and commitment in pursuing his goals against all kinds of resistance and personal setbacks, was impressive. His particular dynamism and resilience is also evident in the development of his artistic career and, finally, in his painting, in which the direction of his own imagery becomes apparent: "The directional arrow in the work of the painter Ernst Weil clearly points to his late pictures. There he finds his goal, which he achieved through curiosity, intuition, perseverance, acceptance of inner restlessness, and through relentless work." (Werner Haftmann)

On the occasion of his 100th birthday, we are presenting new works from the estate of this great painter, whose extraordinary artwork still is of unwavering modernity.



Duration of the exhibition: 8.11.19 – 2.2.20