

GALERIE KREMERS

Schmiedehof 17 (Eingang Eberhard-Roters-Platz) 10965 Berlin

Öffnungszeiten: Mo – Fr, 11 h – 18 h und nach Vereinbarung

T. +49 30 469 98 068 /+49 176 647 27 247 - www.galerie-kremers.com - info@galerie-kremers.de

Galerie Kremers is pleased to invite you to opening of the exhibition on November 20th, 2020

Due to the current corona situation and to ensure a relaxed viewing, please register by email at info@galerie-kremers.de or by phone at 017664727247

TALKING STONES AND MYSTERIOUS PLATES

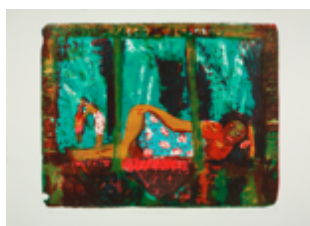
Etchings, Woodcuts, Lithographs by

Uwe Bremer, Johannes Grützke, Gregor Hiltner, Natascha Mann, Friedrich Meckseper, Michael Runschke, Ernst Weil and Gerhard Wendland

Lustful and colorful, obsessed with detail, mysterious and following an order that is unique to the artist, not always easy to decipher, romantic, poetic or drastically expressive, full of wit and depth or serious and thought-provoking, but artistically and technically always on the same highest level and with a variety of different formats, we present masterpieces of printmaking.

There are only a handpicked number of artists who handle printmaking techniques in this mastery and only a few viewers know how much work and skill there is behind these graphic sheets. Such complicated techniques are hardly taught at the academies any more and most of the artistic gravure printing and lithography workshops have already closed.

Being conscious of distance, we look forward to your visit as always and many good conversations in small groups.



Duration of the exhibition until 23.01.2020

Abb.: Natascha Mann, Samoa, 1982, Lithograph, 39 x 49 cm, Uwe Bremer, Resting Cotton Picker, 2004, Colour Etching, E.A., 29 x 41 cm, Gerhard Wendland, Pre-Study, 1956/9, Screen Print, 43 x 60 cm

Friedrich Meckseper, Island, 1987, Colour Etching 56,5 x 75,5 cm, Gregor Hiltner, Picture Puzzle, No. 2, 2004, Colour Etching, Unique Print, 80 x 140 cm, Johannes Grützke, Bone Breaker, 2007, Lithograph 38/40, 100 x 130 cm